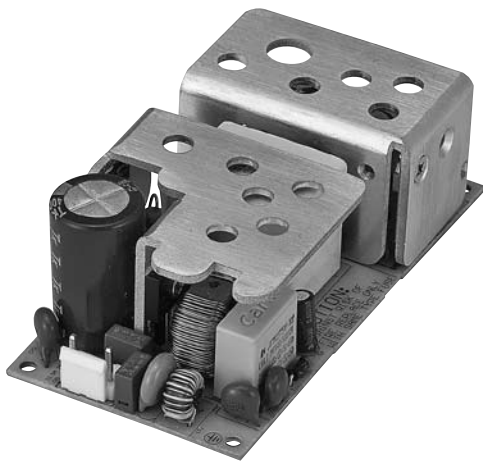


## EP1065 Series



### Features

- High Efficiency
- RoHS Compliance
- Over Voltage Protective Installation
- Over Current Protective Installation
- Short Circuit Protective Installation
- 100% Burn-In
- 100% Hi-Pot Tested
- MTBF > 30,000 hours

### EP V WWW XX Y Z

- V:** The number of output group
- www:** Total Power
- XX:** Main - Power
- Y:** Secondary voltage coding
- Z:** Serial number

### Electrical Specifications

MODEL No.	OUTPUT POWER (W)	OUTPUT VOLTAGE (Vdc)	LOAD		LOAD REGULATION	RIPPLE & NOISE
			MIN. (IO)	MAX. (I)		
Single Output	EP1065XYZ	65W	12, 15, 19, 24, 36, 48V		± 3% Max.	± 2% Max.
	EP1060XYZ	60W	12, 15, 19, 24, 36, 48V		± 3% Max.	± 2% Max.
	EP1050XYZ	50W	5, 12, 15, 19, 24, 36, 48V		± 3% Max.	± 2% Max.
	EP1045XYZ	45W	5, 12, 15, 19, 24, 36, 48V		± 3% Max.	± 2% Max.
	EP1040XYZ	40W	5, 12, 15, 19, 24, 36, 48V		± 3% Max.	± 2% Max.
Dual Output	EP2WWWXYZ	30~65W	12, 15, 19, 24V		± 5% Max.	± 2% Max.
			5V		± 5% Max.	± 2% Max.
Triple Output	EP3WWWXYZ	45~65W	12, 24V		± 5% Max.	± 2% Max.
			5V		± 5% Max.	± 2% Max.
			-12V		± 5% Max.	± 2% Max.

**NOTE:**

- 1 : Ripple & Noise is measured by using 20MHz bandwidth limited oscilloscope and terminated each output with a 0.1uF ceramic capacitor & parallel with 47uF aluminum capacitor at full load and nominal line.
- 2 : Line regulation is defined by changing ±10% of input voltage from nominal line at rated load.
- 3 : Max. Power (W) ≥ Vo x Io

### Electrical Specifications

**INPUT**

- Input Range 90 -264Vac
- Input Current ≤1.5A
- Inrush Current ≤120A at 220V ac At cold start maximum load
- Efficiency 80%~88% depends on models.  
Meet CEC Level V.
- Turn On Time ≤3s

**OUTPUT**

- Over Voltage Protection Latch off or Auto Recovery
- Short Circuit Protection Auto Recovery
- Over Current Protection Auto Recovery

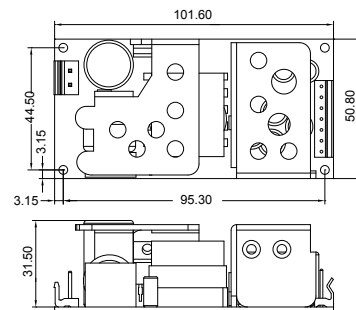
**ENVIRONMENTAL**

- Operating Temperature 0 to 50°C
- Storage Temperature -20 to 85°C
- Storage Humidity 5% to 95 %

**SAFETY**

- UL/CUL, TUV, CB, CE, FCC

### Mechanical Specification



- Mechanical Size: 101.6 X 50.8 X 37 (mm)
- AC Input Connector: Molex 09-65-2048 or equivalent
- DC Output Connector: JST VH Series or equivalent
- Pin Assignment:

Single Output	P1-3	P4-6	P7	
	GND	5~48V	5V(option)	
Multi Output	P1	P2-3	P4-5	P6-7
	-12V	5V	GND	12~24V

- Weight: 200g

**E P V WWW XX Y Z**

E	P	V	WWW	XX	Y	Z
BUSINESS	TYPE	OUTPUT NUMBER	TOTAL POWER	MAIN - POWER	0~9~A~Z	0~9~A~Z
EDAC	Open Frame	1 2 3	030 050 040 065 045	05=5V 24=24V 12=12V 36=36V 15=15V 48=48V 19=19V	0 = NA D = 5V( 0.5A) E = 5V( 2A~4A) T = 5V+(- 12V/0.3A)	0=NA 2= 5V/2A 3= 5V/3A 4= 5V/4A

MODEL NAME	MAIN - POWER			5V/0.5A- POWER			5V/2~4A POWER			-12V POWER			TOTAL POWER
	Vo1(V)	Io1(I)	Wo1(W)	Vo2(V)	Io2(I)	Wo2(W)	Vo2(V)	Io2(I)	Wo2(W)	Vo3(V)	Io3(I)	Wo3(W)	
Single output	EP10651200	12	5.41	65									65
	EP10651500	15	4.33	65									65
	EP10651900	19	3.42	65									65
	EP10652400	24	2.70	65									65
	EP10653600	36	1.80	65									65
	EP10654800	48	1.35	65									65
	EP10601200	12	5.00	60									60
	EP10601500	15	4.00	60									60
	EP10601900	19	3.15	60									60
	EP10602400	24	2.50	60									60
	EP10603600	36	1.66	60									60
	EP10604800	48	1.25	60									60
	EP10500500	5	10.00	50									50
	EP10501200	12	4.16	50									50
	EP10501500	15	3.33	50									50
	EP10501900	19	2.63	50									50
	EP10502400	24	2.08	50									50
	EP10503600	36	1.38	50									50
	EP10504800	48	1.04	50									50
	EP10450500	5	9.00	45									45
	EP10451200	12	3.75	45									45
	EP10451500	15	3.00	45									45
	EP10451900	19	2.36	45									45
	EP10452400	24	1.87	45									45
	EP10453600	36	1.25	45									45
	EP10454800	48	0.93	45									45
	EP10400500	5	8.00	40									40
	EP10401200	12	3.33	40									40
	EP10401500	15	2.66	40									40
	EP10401900	19	2.10	40									40
	EP10402400	24	1.66	40									40
	EP10403600	36	1.11	40									40
EP10404800	48	0.83	40									40	
EP10300500	5	6.00	30									30	
EP10301200	12	2.50	30									30	
EP10301500	15	2.00	30									30	
EP10301900	19	1.57	30									30	
EP10302400	24	1.25	30									30	

MODEL NAME	MAIN - POWER			5V/0.5A- POWER			5V/2~4A POWER			-12V POWER			TOTAL POWER
	Vo1(V)	Io1(I)	Wo1(W)	Vo2(V)	Io2(I)	Wo2(W)	Vo2(V)	Io2(I)	Wo2(W)	Vo3(V)	IO3(I)	Wo3(W)	
EP206512D0	12	5.20	62.5	5	0.5	2.5							65
EP206515D0	15	4.16	62.5	5	0.5	2.5							65
EP206519D0	19	3.28	62.5	5	0.5	2.5							65
EP206524D0	24	2.60	62.5	5	0.5	2.5							65
EP206512E3	12	4.16	50				5	3	15				65
EP206524E3	24	2.08	50				5	3	15				65
EP206512E4	12	3.75	45				5	4	20				65
EP206524E4	24	1.87	45				5	4	20				65
EP205012D0	12	3.95	47.5	5	0.5	2.5							50
EP205015D0	15	3.16	47.5	5	0.5	2.5							50
EP205019D0	19	2.50	47.5	5	0.5	2.5							50
EP205024D0	24	1.97	47.5	5	0.5	2.5							50
EP205012E3	12	2.91	35				5	3	15				50
EP205024E3	24	1.45	35				5	3	15				50
EP205012E4	12	2.50	30				5	4	20				50
EP205024E4	24	1.25	30				5	4	20				50
EP204512D0	12	3.54	42.5	5	0.5	2.5							45
EP204515D0	15	2.83	42.5	5	0.5	2.5							45
EP204519D0	19	2.23	42.5	5	0.5	2.5							45
EP204524D0	24	1.77	42.5	5	0.5	2.5							45
EP204512E2	12	2.91	35				5	2	10				45
EP204524E2	24	1.45	35				5	2	10				45
EP204512E3	12	2.50	30				5	3	15				45
EP204524E3	24	1.25	30				5	3	15				45
EP204012D0	12	3.12	37.5	5	0.5	2.5							40
EP204015D0	15	2.50	37.5	5	0.5	2.5							40
EP204019D0	19	1.97	37.5	5	0.5	2.5							40
EP204024D0	24	1.56	37.5	5	0.5	2.5							40
EP204012E2	12	2.50	30				5	2	10				40
EP204024E2	24	1.25	30				5	2	10				40
EP204012E3	12	2.08	25				5	3	15				40
EP204024E3	24	1.04	25				5	3	15				40
EP203012D0	12	2.29	27.5	5	0.5	2.5							30
EP203015D0	15	1.83	27.5	5	0.5	2.5							30
EP203019D0	19	1.44	27.5	5	0.5	2.5							30
EP203024D0	24	1.14	27.5	5	0.5	2.5							30
EP203012E2	12	1.66	20				5	2	10				30
EP203024E2	24	0.83	20				5	2	10				30
EP306512T3	12	3.86	46.4				5	3	15	-12	0.3	3.6	65
EP306512T4	12	3.45	41.4				5	4	20	-12	0.3	3.6	65
EP305012T3	12	2.61	31.4				5	3	15	-12	0.3	3.6	50
EP305012T4	12	2.20	26.4				5	4	20	-12	0.3	3.6	50
EP304512T2	12	2.61	31.4				5	2	10	-12	0.3	3.6	45
EP304512T3	12	2.20	26.4				5	3	15	-12	0.3	3.6	45
EP306524T3	24	1.93	46.4				5	3	15	-12	0.3	3.6	65
EP306524T4	24	1.72	41.4				5	4	20	-12	0.3	3.6	65
EP305024T3	24	1.30	31.4				5	3	15	-12	0.3	3.6	50
EP305024T4	24	1.10	26.4				5	4	20	-12	0.3	3.6	50
EP304524T2	24	1.30	31.4				5	2	10	-12	0.3	3.6	45
EP304524T3	24	1.10	26.4				5	3	15	-12	0.3	3.6	45