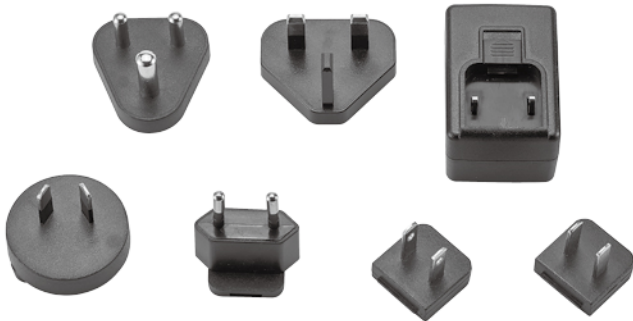


EM1019 Series

AC/DC Single Output Interchangeable Plug
• 15~24Watts Max.



Features

- DoE Compliance
- RoHS Compliance
- Over Voltage Protective Installation
- Over Current Protective Installation
- Short Circuit Protective Installation
- Protection Type: Recovery
- MTBF > 100,000 hours

EM1019 X Y R T- vv PP

x: Output range

Y: Case type V (Vertical)

R: AC Plug type: • U: USA • E: EU • K: UK • A: SAA • C: CHINA

T: Output type: • S (SR)

vv: Specified output voltage, ie 24 is 24Vdc

PP: Connector type, ie 01 for EDACPOWER standard dc cable or please refer to the appendix page

Electrical Specifications

MODEL No.	MAX. OUTPUT POWER (W)	OUTPUT VOLTAGE (Vo)	MIN. LOAD (Io)	MAX. LOAD (Io)	LOAD REGULATION	LINE REGULATION	RIPPLE & NOISE
EM1019AVRS	15W	5-8V	0A	3.0A	± 5%	± 1%	100mV
EM1019BVRS	20W	9-13v	0A	2.0A	± 5%	± 1%	180mV
EM1019CVRS	20W	14-19v	0A	1.42	± 5%	± 1%	200mV
EM1019DVRS	20W	20-27V	0A	1.0A	± 5%	± 1%	250mV
EM1019EVRS	20W	28-35V	0A	0.71A	± 5%	± 1%	280mV
EM1019FVRS	20W	36-48V	0A	0.55A	± 5%	± 1%	360mV
EM1019GVRS	18W	5-8V	0A	3.0A	± 5%	± 1%	100mV
EM1019HVRS	24W	9-13v	0A	2.0A	± 5%	± 1%	180mV
EM1019JVRS	24W	14-19v	0A	1.71A	± 5%	± 1%	200mV
EM1019KVRS	24W	20-27V	0A	1.2A	± 5%	± 1%	250mV
EM1019MVRS	24W	28-35V	0A	0.85A	± 5%	± 1%	280mV
EM1019NVRS	24W	36-48V	0A	0.66A	± 5%	± 1%	360mV

NOTE:

1 : Ripple & noise is measured by using 20MHz bandwidth limited oscilloscope and terminated each output with a 0.1uF ceramic capacitor & parallel with 47uF aluminum capacitor at full load and nominal line.

2 : Line regulation is defined by changing ±10% of input voltage from nominal line at rated load.

3 : Max. Output Power (W) ≥ Vo x Io

Electrical Specifications

INPUT

- Input Range 100Vac to 240 VAC
- Input Current ≤0.8A
- Inrush Current ≤80A at 230 Vac At cold start, maximum load
- Turn On Time ≤3s

OUTPUT

- Over Voltage Protection Auto Recovery
- Short Circuit Protection Auto Recovery
- Over Current Protection Auto Recovery
- Efficiency Meet DOE Level VI
- No Load power ≤0.1W

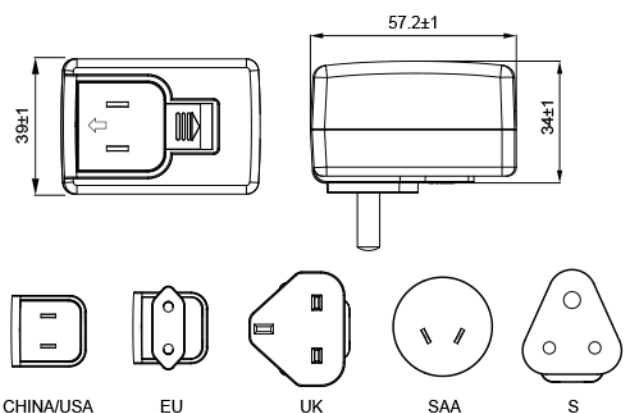
ENVIRONMENTAL

- Operating Temperature 0 to 40°C
- Storage Temperature -20 to 85°C
- Storage Humidity 5% to 90%

SAFETY

- UL/cUL, UL60601, TUV EN60601, CB 60601, CE, FCC

Mechanical Specification



- Case Size: 57.2L x 39W x 34H (mm)
- AC Plug: U: USA, C: CHINA, E: EU, K: UK, A: SAA, S: South Africa
- Weight: 150g