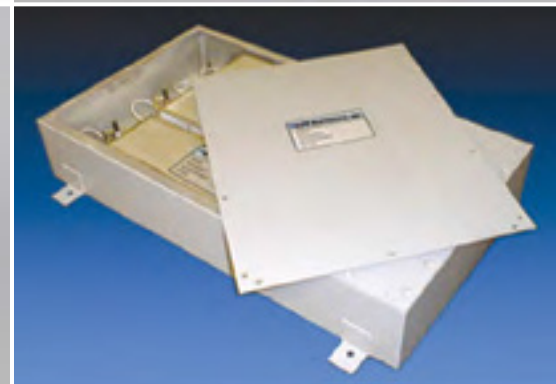


# EMI FILTERS

## SHORT FORM CATALOG



# EDAC

**EDACPOWER ELECTRONICS PTE LTD**

6 Tagore Drive, #01-02,  
Tagore Building, Singapore 787623

Tel : (65) 6454 7877

Fax : (65) 6453 7977

Email : sales@edac.com.sg

Website: <http://www.ep-power.com>

# Astrodyne

Now you have power.

POWER SUPPLIES • EMI FILTERS • ELECTRONIC CONTROLS

**RP** RADIUS  
POWER

**LCR**

**FILTER**  
CONCEPTS INC.

## Engineered product solutions for demanding applications.

As part of the Astrodyne family of companies, LCR Electronics, Radius Power and Filter Concepts specialize in the design and manufacture of standard and custom EMI filters, EMC testing as well as engineering and contract manufacturing services. We have expertise in appliance, military and aerospace, commercial, industrial, telecommunications and medical applications. From in-house and on-site services, to ongoing investments in research, development, production and sales, we are now uniquely positioned as a global leader in the industry.

We offer a wide variety of standard products ranging from 1 to 2,500 amps for both commercial and military applications. Additionally, we custom design and manufacture EMI power line filters and integrated modules to meet the exact specifications of our customers' application needs.

Astrodyne operates state-of-the-art EMI test facilities for pre-compliance testing for our customers' products and systems. Our design and application engineering teams provide expert engineering support to bring our customers' equipment into compliance and to market quickly and proficiently. We offer filters for a number of applications and industries including:

- Single Phase EMI Filters
- Three Phase EMI Filters
- IEC Inlet Filters
- DC EMI Filters
- Inverter EMI Filters
- Medical Grade EMI Filters
- Commercial & MRI Shielded Room Filters
- Appliance and Washing Machine Filters
- Custom Commercial Filters
- Feed-Through Filters
- Telecom EMI Filters
- DO-160 Commercial Aviation Filters
- Military EMI Filters
- Military EMI/HEMP Shielded Facility Filters
- Custom Military Filters
- Suppression Components

## Integrated to maximize reliability.

The benefits of working with our vertically-integrated organization holds value for both our contract manufacturing customers and those requiring custom production units. Experienced design and engineering teams coordinate closely with in-house production and testing personnel at our facilities. Key services offered by Astrodyne include:

- Prototype & Pilot Production Runs
- Certified Soldering
- Shielded EMC Test Enclosures
- Fabrication & Metal Forming
- In-house UL & European Certification
- In-house Environmental Testing



- 1** Our corporate headquarters in Mansfield, MA houses a variety of professional support services including design and engineering, quality, manufacturing and distribution.
- 2** Experienced design and engineering teams coordinate closely with in-house production and testing personnel at our 50,000 sq. ft. facility in Norristown, PA.
- 3** Our wholly owned RoHS compliant production facility in Kunshan near Shanghai, China provides a cost-effective solution for delivering high volume commercial products, as well as flexibility for build to print manufacturing.
- 4** Our broad range of products and services includes the development and implementation of both standard and customized solutions, as well as in-house UL and IEC certification at our Yorba Linda, CA location.

# CONTENTS

Single Phase EMI Filters	Page 4
Three Phase EMI Filters	Page 5
IEC Inlet Filters	Page 6
DC EMI Filters	Page 7
Inverter EMI Filters	Page 8
Medical Grade EMI Filters	Page 9
Commercial, MRI Room & Shielded Enclosure Filters	Page 10
Custom Commercial Filters, Suppression Components, Appliance & Washing Machine Filters	Page 11
Feed-Through & Tubular Filters, Telecom EMI Filters	Page 12
Military EMI Filters	Page 13
Military EMI/HEMP Shielded Facility Filters, Custom Military Filters	Page 14
Pre-Compliance Testing and Safety Agency Certification	Page 15



# SINGLE PHASE EMI FILTERS



Single phase filters attenuate electrical noise generated by appliances as well as industrial, telecommunication, commercial, fitness and medical equipment. Astrodyne offers standard single phase EMI filter solutions from 1 A to 450 A. Single phase filters are available in both general purpose and low leakage current medical versions.

General specifications: 120/250 or 300 VAC, rated @ 40° C, 50/60 Hz operation. Consult individual datasheet for details.

Filter Series	Description	Current Ratings
<b>DSC1000-1</b>	High Performance Dual Stage Power Line Filter	16 A
<b>DSC1000-3</b>	High Performance Dual Stage Power Line Filter	16 A
<b>DSC1000-4</b>	High Performance Dual Stage Power Line Filter	16 A
<b>DSC1000-5</b>	High Performance Single Stage Power Line Filter	16 A
<b>DSC2000</b>	High Performance Dual Stage Power Line Filter	20 A
<b>RP100</b>	Compact Single Stage Power Line Filters	3 A to 10 A
<b>RP105</b>	Compact Single Stage Power Line Filters	3 A to 20 A
<b>RP110</b>	Compact Single Stage Power Line Filters	3 A to 30 A
<b>RP115</b>	Compact Single Stage Power Line Filters	3 A to 20 A
<b>RP120</b>	Medium - High Performance Single Stage Power Line Filters	10 A to 50 A
<b>RP125</b>	High Performance Single Stage Power Line Filters	30 A to 80 A
<b>RP130</b>	High Performance Single Stage Power Line Filters	3 A to 40 A
<b>RP135</b>	High Performance Single Stage Power Line Filters	1 A to 200 A
<b>RP210</b>	Compact Dual Stage Power Line Filters	3 A to 16 A
<b>RP220</b>	High Performance Dual Stage Power Line Filters	6 A to 20 A
<b>RP225</b>	High Performance Dual Stage Power Line Filters	3 A to 20 A
<b>RP230</b>	High Performance Dual Stage Power Line Filters	3.5 A to 40 A
<b>RP240</b>	High Performance Dual Stage Power Line Filters	6 A to 150 A
<b>RP500</b>	EMI/Harmonics Dual Stage Power Line Filter	10 A
<b>RP2180</b>	Ultra Compact Single Stage Power line Filters	1 A to 10 A
<b>RPC1199</b>	Single Stage, GND Choke Power Line Filters	20 A to 30 A
<b>LCR 050</b>	Insulated Single Phase Box Type Filters	1 A to 10 A
<b>LCR D</b>	Single Phase Liquid Cooled Filters	1 A to 450 A



# 3-PHASE EMI FILTERS



**RP** RADIUS  
POWER

**LCR**

**RoHS**



Typical applications for these EMI and RF filters include 3-phase industrial drives, inverters, controllers, frequency converters and industrial machine tools. Other applications include industrial power supplies, UPS, fixed computer systems (mainframes), MRIs and X-Ray equipment, heavy duty industrial equipment and more.

General specifications: 480 or 600 VAC Delta or WYE configuration, rated @ 50° C, 50/60 Hz operation. Consult individual datasheet for details.

Filter Series	Description	Current Ratings
<b>RP300</b>	3-Phase Delta Single Stage Power Line Filters	25 A to 500 A
<b>RP305</b>	Compact 3-Phase Delta Single Stage Power Line Filters	6 A to 60 A
<b>RP310</b>	Ultra Compact 3-Phase Delta Single Stage Power Line Filters	6 A to 20 A
<b>RP320</b>	3-Phase Delta Dual Stage Power Line Filters	15 A to 300 A
<b>RP325</b>	3-Phase Delta Dual Stage Power Line Filters	15 A to 300 A
<b>RP327</b>	Bookshelf, 3-Phase Delta Dual Stage Power Line Filters	7 A to 250 A
<b>RP328</b>	Bookshelf, 3-Phase Delta Single Stage Power Line Filters	7 A to 180 A
<b>RP330</b>	3-Phase Delta Dual Stage Power Line Filters	10 A to 250 A
<b>RP350</b>	3-Phase Delta Single Stage Power Line Filters	20 A to 100 A
<b>RP357</b>	3-Phase Delta Compact Multi-Stage High Current EMI Power Line Filters, 600 V	150 A to 2500 A
<b>RP359</b>	3-Phase Delta Compact Multi-Stage High Current EMI Power Line Filters	150 A to 2500 A
<b>RP360</b>	3-Phase Delta Single Stage Power Line Filters	20 A to 60 A
<b>RP370</b>	3-Phase Delta Compact High Current EMI Power Line Filters	250 A to 1000 A
<b>RP380</b>	3-Phase Delta Power Line Filters, 600 V	15 A to 300 A
<b>RP400</b>	3-Phase WYE Single Stage Power Line Filters	15 A to 300 A
<b>RP405</b>	3-Phase WYE Single Stage Power Line Filters	6 A to 40 A
<b>RP410</b>	Ultra Compact 3-Phase WYE Single Stage Power Line Filters	6 A to 20 A
<b>RP410HP</b>	Ultra Compact 3-Phase WYE Single Stage Power Line Filters, High Performance	6 A to 20 A
<b>RP415</b>	3-Phase WYE Single Stage Power Line Filters	8 A to 160 A
<b>RP420</b>	3-Phase WYE Dual Stage Power Line Filters	15 A to 300 A
<b>RP425</b>	3-Phase WYE Dual Stage Power Line Filters	15 A to 300 A
<b>RP428</b>	3-Phase WYE Dual Stage Power Line Filters	8 A to 600 A
<b>RP480</b>	3-Phase WYE Power Line Filters, 600 V	15 A to 300 A
<b>RPC1195</b>	3-Phase WYE Dual Stage Power Line Filters	20 A to 30 A
<b>RPC1197</b>	3-Phase WYE Dual Stage 1U Power Line Filters	20 A to 30 A
<b>LCR D</b>	3-Phase Liquid Cooled Filters	1 A to 450 A

# IEC INLET FILTERS

Easy to install and use, these filters are ideal for industrial and commercial electronics that require EMI/RFI protection, including computers, communications equipment, LCD TVs, toys and sports and fitness equipment. All of our IEC inlet EMI filters are available in both general purpose and low leakage current medical versions.



**RP** RADIUS POWER

**LCR**

**RoHS**



General specifications: 120/250 VAC, rated @ 40° C, 50/60 Hz operation. Consult individual datasheet for details.

Filter Series	Description	Current Ratings
<b>RP180</b>	IEC Inlet Single Stage Power Line Filters	15 A to 20 A
<b>RP185</b>	High Performance IEC Inlet Single Stage Power Line Filters	1 A to 15 A
<b>RP187</b>	High Performance IEC Inlet Dual Stage Power Line Filters	1 A to 20 A
<b>RP188</b>	IEC Inlet Single Stage Power Line Filters	3 A to 10 A
<b>LCR 080</b>	General Purpose Power Entry and Outlet Filters	1 A to 20 A
<b>LCR 080-L</b>	High Performance and High Attenuation Power Entry Filters	1 A to 8 A
<b>LCR 081</b>	General Purpose Filtered Power Entry Modules with Fuse Holder	1 A to 10 A
<b>LCR 082</b>	General Purpose Filtered Power Entry Modules with Fuse Holder and Switch	1 A to 10 A
<b>LCR 083</b>	General Purpose Filtered Power Entry Modules with Double Fuse Holder	1 A to 10 A
<b>LCR 084</b>	General Purpose Filtered Power Entry Modules with Double Fuse Holder and Switch	1 A to 10 A
<b>LCR 085</b>	General Purpose Filtered Power Entry Modules with Switch	1 A to 10 A
<b>LCR 086</b>	High Performance General Purpose Power Entry Filters	3 A to 20 A
<b>LCR 088</b>	High Performance Double Stage Integrated EMI Filters with Self-Recovery Safety Fuse and Switch	4 A to 10 A

# DC EMI FILTERS

Astrodyne offers standard and custom DC EMI filters for all applications including solar, telecom and DC de-coupling. Ratings are available up to 1200 VDC and 2500 A.



General specifications: up to 1200 VDC operation. Consult individual datasheet for details.

Filter Series	Description	Current Ratings
<b>RP600</b>	High Performance DC Power Line Filters	15 A to 125 A
<b>RP600C</b>	High Performance DC Power Line Filters with Circuit Breaker	15 A to 125 A
<b>RP605</b>	High Current DC Power Line Filters	100 A to 200 A
<b>RP610</b>	High Performance Single Stage DC Power Line Filters	3 A to 20 A
<b>RP615</b>	High Performance Dual Stage DC Power Line Filters	3 A to 20 A
<b>RP650</b>	High Performance Single Line Single Stage DC Power Line Filters	3 A to 20 A
<b>RP655</b>	High Performance Single Line Dual Stage DC Power Line Filters	3 A to 20 A
<b>RP680</b>	Compact High Current DC EMI Power Line Filters	250 A to 1000 A
<b>RP690</b>	High Voltage/High Current DC Power Line Filters	50 A to 500 A
<b>RP692</b>	High Voltage/High Current DC Power Line Filters	25 A to 2500 A
<b>RPC1299-30</b>	Dual Stage PCB DC Power Line Filter	30 A
<b>RPC1158-50</b>	Compact Single Stage DC Power Line Filter	50 A

# INVERTER EMI FILTERS

These AC and DC filters are used for applications that have frequency inverters or inverter-based control systems. Inverter applications include solar, grid-tied, transformerless and DC decoupling.



RoHS



General specifications: 480 or 600 VAC and 1200 VDC, rated @ 50° C, 50/60 Hz operation. Consult individual datasheet for details.

Filter Series	Description	Current Ratings
RP240	High Performance Dual Stage Power Line Filters	6 A to 150 A
RP320	3-Phase Delta Dual Stage Power Line Filters	15 A to 300 A
RP325	3-Phase Delta Dual Stage Power Line Filters	15 A to 300 A
RP327	Bookshelf, 3-Phase Delta Dual Stage Power Line Filters	7 A to 250 A
RP328	Bookshelf, 3-Phase Delta Single Stage Power Line Filters	7 A to 180 A
RP330	3-Phase Delta Dual Stage Power Line Filters	10 A to 250 A
RP350	3-Phase Delta Single Stage Power Line Filters	20 A to 100 A
RP357	3-Phase Delta Compact Multi-Stage High Current EMI Power Line Filters, 600 V	150 A to 2500 A
RP359	3-Phase Delta Compact Multi-Stage High Current EMI Power Line Filters	150 A to 2500 A
RP692	High Voltage/High Current DC Power Line Filters	25 A to 2500 A



# MEDICAL GRADE EMI FILTERS

Our complete line of off-the-shelf filters is available in a medical grade version. All filters are approved with variable line to ground capacitances to meet leakage current requirements of all applications and environments. Applications include patient medical devices, diagnostic equipment, surgical beds, MRI and X-ray machines and more.



**RP** RADIUS  
POWER

**LCR**

**RoHS**



General specifications: 120/250 or 277/480 VAC, rated @ 40° C, 50/60 Hz operation. Consult individual datasheet for details.

Filter Series	Description	Current Ratings
<b>RP100</b>	Compact Single Stage Power Line Filters	3 A to 10 A
<b>RP105</b>	Compact Single Stage Power Line Filters	3 A to 20 A
<b>RP110</b>	Compact Single Stage Power Line Filters	3 A to 30 A
<b>RP135</b>	High Performance Single Stage Power Line Filters	1 A to 200 A
<b>RP210</b>	Compact Dual Stage Power Line Filters	3 A to 16 A
<b>RP225</b>	High Performance Dual Stage Power Line Filters	3 A to 20 A
<b>RP230</b>	High Performance Dual Stage Filters	3.5 A to 40 A
<b>RP325</b>	3-Phase Delta Dual Stage Power Line Filters	15 A to 300 A
<b>RP360</b>	3-Phase Delta Single Stage Power Line Filters	20 A to 60 A
<b>RP405</b>	3-Phase WYE Single Stage Power Line Filters	6 A to 40 A
<b>RP425</b>	3-Phase WYE Dual Stage Power Line Filters	15 A to 300 A
<b>RP180</b>	IEC Inlet Single Stage Power Line Filters	15 A to 20 A
<b>RP185</b>	High Performance IEC Inlet Single Stage Power Line Filters	1 A to 15 A
<b>RP187</b>	High Performance IEC Inlet Dual Stage Power Line Filters	1 A to 20 A
<b>RP188</b>	IEC Inlet Single Stage Power Line Filters with Fuse and Switch	3 A to 10 A
<b>LCR 080M</b>	Medical Power Entry and Outlet Filters	1 A to 20 A
<b>LCR 080M-L</b>	High Performance and High Attenuation Medical Power Entry Filters	1 A to 8 A
<b>LCR 081M</b>	Medical Filtered Power Entry Modules with Fuse Holder	1 A to 10 A
<b>LCR 082M</b>	Medical Filtered Power Entry Modules with Fuse Holder and Switch	1 A to 10 A
<b>LCR 083/083M</b>	Medical Filtered Power Entry Modules with Double Fuse Holder	1 A to 10 A
<b>LCR 084M</b>	Medical Filtered Power Entry Modules with Double Fuse Holder and Switch	1 A to 10 A
<b>LCR 085M</b>	Medical Filtered Power Entry Modules with Switch	1 A to 10 A
<b>LCR 086M</b>	High Performance Medical Power Entry Filters	3 A to 20 A

# COMMERCIAL, MRI ROOM & SHIELDED ENCLOSURE FILTERS

Astrodyne's MRI room and shielded enclosure filters help isolate inside environments from outside electrical noise by attenuating EM interference from outside sources. These filters are UL Listed and provide 100 dB attenuation from 14 KHz/150 KHz/5 MHz up to 10 GHz.



General specifications: Up to 277/ 480 VAC, rated @ 50° C, 50/60 Hz operation. Consult individual datasheet for details.

Filter Series	Description	Current Ratings
<b>LCR 057/01</b>	100 dB @14 KHz High Performance Shielded Room Filters	10 A to 250 A
<b>LCR 057/02</b>	100 dB @150 KHz Shielded Room Filters	10 A to 250 A
<b>LCR 058/058E</b>	Telephone Line, Data Line, Alarm Line and Control Line Filters	0.5 A to 5 A
<b>LCR 059</b>	MRI Room and Shielded Enclosure Filters	1 A to 50 A

# CUSTOM COMMERCIAL FILTERS

With our extensive design experience, Astrodyne can provide specialty and custom EMI and RFI filters to match your exact specifications. Typical applications include small appliances, vacuum cleaners, portable tools, medical devices and other commercial equipment.



**LCR**

**RoHS**

# SUPPRESSION COMPONENTS

As a world leader in the EMI filter and RFI filter component business, Astrodyne offers a wide range of suppression components including capacitors, custom coils and high frequency chokes.

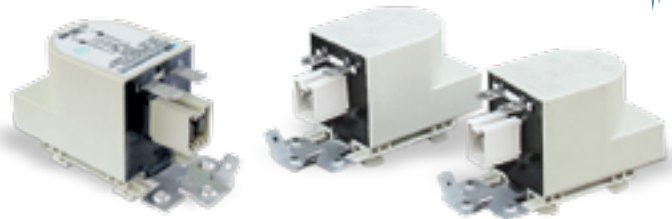


**LCR**

**RoHS**

# APPLIANCE & WASHING MACHINE FILTERS

Astrodyne manufactures standard and custom EMI filters for portable tools, vacuum cleaners, blenders, mixers, white goods, pumps, floor care equipment, treadmills, microwave ovens and power supplies.



**LCR**

**RoHS**



General specifications: 250 VAC, rated up to @ 85° C, 50/60 Hz operation. Consult individual datasheet for details.

Filter Series	Description	Current Ratings
<b>LCR 095/01</b>	White Goods General Purpose Filters	10 A to 16 A
<b>LCR 095/02</b>	High Ambient, High Surge Washing Machine and White Goods Filters	6 A to 16 A
<b>LCR 095/03/04</b>	High Performance Washing Machine Filters	10 A to 16 A
<b>LCR 095/05</b>	High Ambient Dishwasher and Light White Goods Filters	16 A
<b>LCR 095/06</b>	General Purpose Small Size and Low Cost White Goods Filters	16 A
<b>LCR 095/07</b>	Top Load Washer, Dishwasher and Light White Goods Filters	3 A to 16 A

# FEED-THROUGH & TUBULAR FILTERS



Our feed-through filters provide high insertion loss from KHz to GHz frequencies for applications such as mobile shelters, shielded enclosures, base stations and switching equipment. Astrodyne offers commercial versions (056 series) as well as MIL-F-15733 compliant filters (F14000 series) for military applications.

Filter Series	Description	Current Ratings
<b>LCR 056</b>	Feed-Through Filters	5 A to 100 A
<b>LCR F14000</b>	Tubular EMI Filters (MIL-F-15733)	1 A to 50 A

# TELECOM EMI FILTERS



Our extensive offering of telecom filters includes AC and DC EMI power line filters, and custom telecom EMI filters for 48 VDC platforms as well as board level DC-DC converter and related applications.

Filter Series	Description	Current Ratings
<b>RP600</b>	High Performance DC Power Line Filters	15 A to 125 A
<b>RPC1158-50</b>	Compact Single Stage DC Power Line Filter	50 A
<b>RPC1299-30</b>	Dual Stage PCB DC Power Line Filter	30 A

# MILITARY EMI FILTERS

Astrodyne's off-the-shelf military EMI filters provide military-grade specifications and performance for MIL-STD-461, Tempest and DO-160 applications. Customized and fully custom versions are offered for more demanding applications.



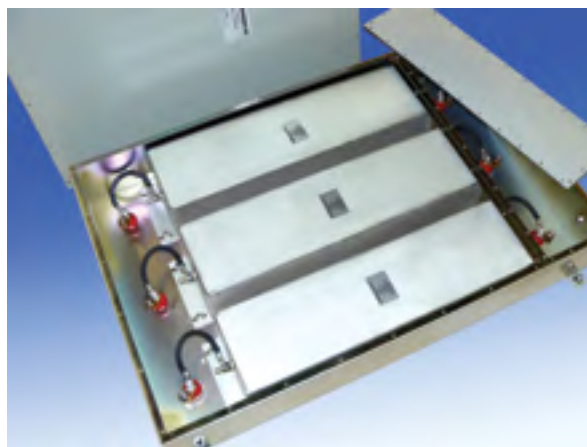
Filter Series	Description	Current Ratings
<b>LCR F9100</b>	Extended Temperature Rugged COTS Single Stage Single Phase Filters	5 A to 35 A
<b>LCR F9200</b>	Extended Temperature Rugged COTS Dual Stage Single Phase Filters	5 A to 35 A
<b>LCR F1928X</b>	MIL/COTS AC and DC EMI Power Line Filters	5 A to 30 A
<b>RPM6000</b>	MIL/COTS DC EMI Power Line Filters	5 A to 60 A
<b>RPM6200</b>	MIL/COTS DC EMI Power Line Filters	5 A to 60 A
<b>RPM6400</b>	MIL/COTS DC EMI Power Line Filters	5 A to 50 A
<b>RPM6600</b>	MIL/COTS DC EMI Power Line Filters	5 A to 50 A
<b>RPM7000</b>	MIL/COTS AC, Single Phase EMI Power Line Filters	5 A to 50 A
<b>RPM7020</b>	MIL/COTS Compact AC, Single Phase EMI Power Line Filters	5 A to 20 A
<b>RPM7050</b>	MIL/COTS AC, Single Phase 1U Height EMI Power Line Filters	5 A to 30 A
<b>RPM7200</b>	MIL/COTS AC, Single Phase EMI Power Line Filters	5 A to 50 A
<b>RPM8000</b>	MIL/COTS 3-Phase WYE EMI Power Line Filters	5 A to 150 A
<b>RPM8500</b>	MIL/COTS 3-Phase Delta EMI Power Line Filters	5 A to 150 A
<b>RPM9000</b>	MIL/COTS AC, Single Phase IEC Inlet EMI Power Line Filters	5 A to 20 A
<b>RPMC5014-63</b>	MIL/COTS 3-Phase Delta EMI Power Line Filter	63 A
<b>RPT5000</b>	TEMPEST/COTS DC EMI Power Line Filters	5 A to 35 A
<b>RPT5500</b>	TEMPEST/COTS DC EMI Power Line Filters	5 A to 30 A
<b>RPT5510</b>	TEMPEST/COTS AC EMI Power Line Filters	5 A to 25 A
<b>RPTC2001-225</b>	TEMPEST/COTS AC 3-Phase WYE EMI Power Line Filter	225 A
<b>RPTC2002-10</b>	TEMPEST/COTS AC Single Phase EMI Power Line Filter	10 A
<b>RPTC2003-60</b>	TEMPEST/COTS AC Single Phase EMI Power Line Filter	60 A
<b>RPTC2004-100</b>	TEMPEST/COTS AC 3-Phase WYE EMI Power Line Filter	100 A
<b>RPTC2010-30</b>	TEMPEST/COTS AC Single Phase EMI Power Line Filter	30 A
<b>RPTC2011-100</b>	TEMPEST/COTS AC Single Phase EMI Power Line Filter	100 A
<b>RPTC2012-60</b>	TEMPEST/COTS AC 3-Phase WYE EMI Power Line Filter	60 A



# MILITARY EMI/HEMP SHIELDED FACILITY FILTERS

Our power line filters are designed to meet or exceed the requirements of MIL-STD-220 with 100 dB attenuation from 14 KHz to 10 GHz. Filters with insertion loss performance extended up to 40 GHz are available upon request.

Our HEMP filters meet point of entry requirements of MIL-STD-188-125-1 for short and intermediate pulses. These filters are fitted with high-transient suppressors in front of the inductive input circuit, resulting in low residual currents during an EMP pulse and protecting the connected equipment.



Filter Series	Description	Current Ratings
<b>LCR F</b>	Facility/Shielded Room Power Line Filters	20 A to 1600 A
<b>LCR FH</b>	HEMP/EMI Power Line Filters	20 A to 1600 A
<b>LCR F15000</b>	Data, Communications, Alarm and Control Line EMI Filters	0.5 A to 5 A
<b>LCR 058-EH</b>	EMI/HEMP Telephone, Data, Alarm and Control Line Filters	0.5 A to 5 A

# CUSTOM MILITARY FILTERS

For over two decades, Astrodyne has designed, developed and manufactured a complete range of custom AC and DC EMI and RFI filters for the military to help our customers meet MIL-STD-461, RTCA/DO-160 and other EMC requirements. Filters are offered for all current and voltage ratings, for 50/60Hz and 400 Hz applications. We can supply aerospace, Tempest and military filters with various levels of transient voltage protection (EMP, HEMP and HERF). With two fully equipped EMC test chambers, we also offer full EMC testing and analysis for our customer's products and equipment to assure they are brought into compliance quickly and cost-effectively.



Our custom capabilities include:

- EMI and RFI Filter Design and Development
- EMC Testing to MIL-STD-461, MIL-STD-220, TEMPEST, CE and Other Standards
- Product Evaluation and Pre-Compliance Testing
- Problem Analysis and Assessment
- EMC Consulting Services

# Pre-Compliance Testing and Safety Agency Certification

Astrodyne offers two different testing capabilities to our customers – pre-compliance testing and UL/IEC certification services. Having these labs on-site at our Norristown, PA, Yorba Linda, CA and Kunshan, China facilities not only saves time in the certification process, but also money for our customers.

## Pre-Compliance Testing

Pre-compliance testing dramatically improves a device's chance of passing EMC testing and significantly lowers the risk of failure during the certification process. Failing an EMC test poses a substantial threat to project deadlines and budget – something no company wants to go through. At Astrodyne, we offer comprehensive testing and analysis – including three fully equipped EMC test chambers located in Norristown, PA, Yorba Linda, CA and Kunshan, China – enabling us to quickly and cost-effectively bring products into compliance.

## UL, CSA and IEC Certification

In addition to its pre-compliance testing, the Yorba Linda facility also features a UL and SEMKO certified lab.

Our Client Test Data Program (CTDP) at Yorba Linda offers UL and CSA certification while the ENEC MTL (Manufacturer's Test Laboratory) offers SEMKO certification, allowing for certification to domestic and international standards. With these labs readily on-site, Astrodyne is able to certify filters to various safety standards including UL 1283, CSA C22.2 No. 8 and IEC/EN 60939-1/2.

Recently our CTDP program was extended to include power supply test and certification capabilities. Power supplies are harmonized to global standards including IEC/EN 60950 (ITE standard), IEC/EN 60601 (medical standard) as well as IEC/EN 60950 (ITE standard), IEC/EN 60601 (medical standard) as well as IEC/EN 60950 (ITE standard).



## Accuracy, Lower Cost and Quick Time To Market

All of our labs feature the same calibrated test equipment found in a typical final testing facility, offering an extremely high level of accuracy. They also enable us to demonstrate EMI and safety performance of filter and power supply products separately or together, in a quick and accurate manner.

By offering pre-compliance testing and UL, CSA and SEMKO certification testing, Astrodyne offers:

- Shorter lead times for safety approvals
- Reduced risk of failing safety or EMI tests to avoid potentially costly retesting/recertification
- Quicker time to market with a fully certified product

Our experienced EMI/RFI filter design engineers and EMC testing personnel design our products to provide high-reliability performance for both COTS and custom solutions. Design engineers can feel confident that when they send their devices to our facility they are assured to pass.

For more information, contact us today.

## Comprehensive testing with the EMC experience you need.



*Comprehensive testing and analysis – including two fully equipped EMC test chambers – enable us to quickly and cost-effectively bring your products into compliance.*



*Our experienced EMI/RFI filter design engineers and EMC testing personnel design our products to provide high-reliability performance – for both COTS and custom solutions.*

# The Power of Astrodyne.

Power-up with our expanded technologies, engineering support and global manufacturing. The addition of the RO Associates, Jerome Industries, LCR Electronics, Radius Power and Filter Concepts brands to the Astrodyne family has expanded our extensive line-up of standard and custom solutions. We've long been known for our experience, personal service and creative thinking... now you'll find even more ways to help you solve your demanding power challenges.



*Our experience with compatibility (EMC) standards and high reliability power conversion products provides the insight to support compliance across a variety of military, aerospace, medical and commercial requirements.*



## EDACPOWER ELECTRONICS PTE LTD

6 Tagore Drive, #01-02,  
Tagore Building, Singapore 787623  
Tel : (65) 6454 7877  
Fax : (65) 6453 7977  
Email : sales@edac.com.sg  
Website: <http://www.ep-power.com>

# Astrodyne

Now you have power.

POWER SUPPLIES • EMI FILTERS • ELECTRONIC CONTROLS

**RP** RADIUS  
POWER

**LCR**

**FILTER  
CONCEPTS INC.**

